

# The Future of mobility is Shared, Connected & Electric



## Cube 48V, 28Ah Li-ion Portable Battery

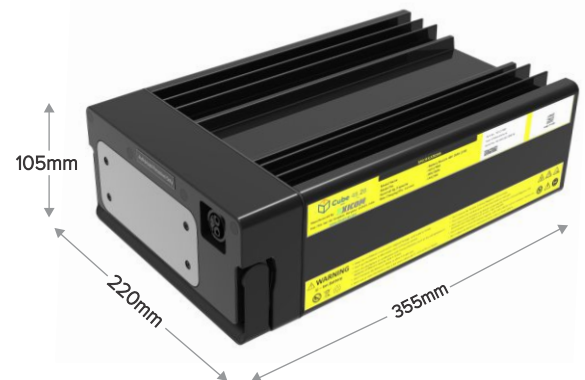
A reliable, portable & high performance Li-ion battery for light electric vehicles

### Key Features:

- Compatible with most existing electric 2W and 3W
- CAN enabled for vehicle & charging communication needs
- Ergonomic design enables easy access and easy charging or swapping experience
- High voltage (14S) architecture enables better acceleration & increased mileage per cycle
- Use of NCM cells for high energy density and cycle life
- Intelligent charging algorithm to enhance battery life
- Bluetooth based App connectivity for user interface
- Seamless integration with our cloud platform for remote management
- AIS 048 certified

### Performances:

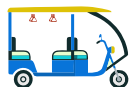
- High energy density –upto 215Wh/l
- Peak power tolerance of 4.3kW for 10 sec
- Cycle life of +1,000 cycles under nominal operating conditions
- Safety first with multi-level protection features
- Unibody Al extrusion designed for superior thermal performance
- Proprietary built in battery management system (BMS) & power distribution unit (PDU)
- Works in heat, rain, sun – Our batteries are all weather proof with IP67 certification
- Minimal self-discharge at 3%/month



### Applications:



E-Bikes



E-Auto



Small EV's



Forklifts



AGV

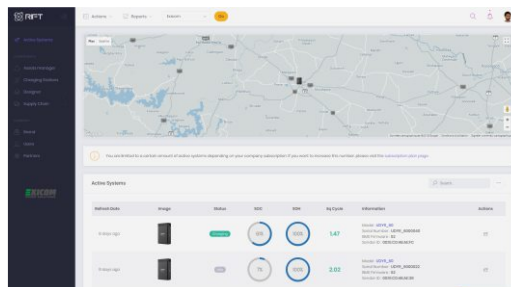
# Technical Specifications

<b>General</b>	Battery pack	28Ah, NMC chemistry
	Rated energy	1.44kWh (@0.2C, 100% DoD at 25°C)
	Specific energy	128wh/Kg
	Volumetric energy	175wh/l
	Estimated life (at 80% DoD and 35°C)	1,000 cycles
<b>Electrical Characteristics</b>	Nominal voltage	50.4Vdc
	Charge current	14A (nominal)
	Nominal charging time	2 hours
	Discharge current	28A (nominal)
	Peak discharge current	75A for 10 sec
	Efficiency	>97%
	Connector type	Circular IP67 connector with 2 power pins and 4 signal pins SBS-75X with 2 power pins and 4 signal pins (2CAN + 2I/O)
<b>Environment &amp; Mechanical</b>	Operating temperature	-10 to 50°C for charge and -20 to 60 °C for discharge
	IP class	IP 67
	Humidity	0-95% (non-condensing)
	Dimensions (w x d x h)	220 x 105 x 355 mm
	Weight	11.2 Kg
	Cooling	Passive
<b>Protections</b>	Protections: Over/under temperature, over/under voltage, over current, short circuit, permanent hardware failure detection	
<b>Communication Interface</b>	CAN Bus for vehicle and charger communication	
	SD card for regular fixed battery data & alarm event logging	
	Optional Bluetooth for mobile application dashboard showing real time battery data	
	Optional 4G telematics card for getting real time battery performance data and remote programming capability	
<b>Applicable Standards</b>	Transportation	UN38.3
	Safety	ARAI 048, UL2271
	EMI/EMC	EN61000-4-2 to -6
	Environment	ROHS complaint

## Mobile App



## Cloud Management System



## High performance BMS

