

The Future of mobility is Shared, Connected & Electric



Cube 48V, 75Ah Li-ion Fixed Battery

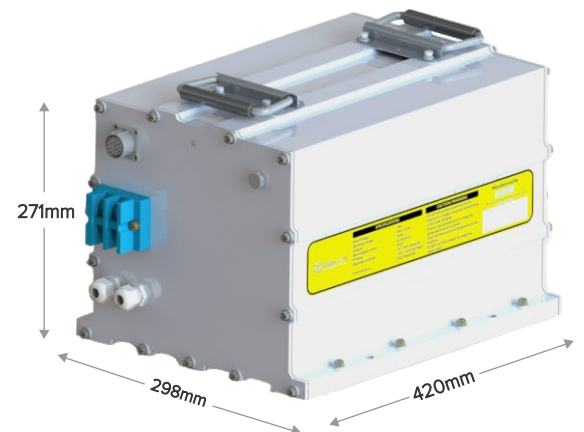
A reliable high performance Li-ion battery for light electric vehicles

Key Features:

- Compatible with most existing electric 3W
- CAN enabled for vehicle & charging infra communication needs
- Ergonomic design enables easy access and easy charging or swapping experience
- High voltage (16S) architecture enables better acceleration & increased mileage per cycle
- Use of LFP cells for high energy density and cycle life
- Intelligent charging algorithm to enhance battery life
- Bluetooth based App connectivity for user interface
- Seamless integration with our cloud platform for remote management
- AIS 048 certified

Performances:

- High energy density –upto 110Wh/l
- Peak power tolerance of 4.3kW for 10 sec
- Cycle life of +1,500 cycles under nominal operating conditions
- Safety first with multi-level protection features
- Unibody Al extrusion designed for superior thermal performance
- Proprietary built in battery management system (BMS) & power distribution unit (PDU)
- Works in heat, rain, sun – our batteries are all weather proof with IP67 certification
- Minimal self-discharge at 3%/month



Applications:



E-Bikes



E-Auto



Small EV's



Forklifts



AGV

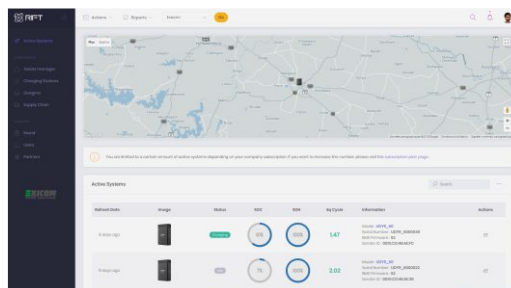
Technical Specifications

General	Battery pack	75Ah, LFP chemistry
	Rated energy	3.84kWh (0.2C, 100% DoD at 25 °C)
	Specific energy	98wh/Kg
	Volumetric energy	110wh/l
	Estimated life (at 80% DoD and 35°C)	1,500 cycles
Electrical Characteristics	Nominal voltage	51.2Vdc
	Charge current	37.5A (nominal)
	Nominal charging time	2 hours
	Discharge current	35A (nominal)
	Peak discharge current	95A for 10 sec
	Efficiency	>97%
	Connector Type	Standard: Terminal blocks for power connection; 19 pin signal connector (I/O + CAN) Optional:75X with 2 power pins and 4 signal pins (2CAN + 2I/O)
Environment & Mechanical	Operating temperature	-10 to 50°C for charge and -10 to 60 °C for discharge
	IP class	IP 65
	Humidity	0-95% (non-condensing)
	Dimensions (w x d x h)	420x 298 x 271 mm
	Weight	38.2 Kg
	Cooling	Passive
Protections	Over/under temperature, over/under voltage, over current, short circuit, permanent hardware failure detection	
Communication Interface	CAN Bus for vehicle and charger communication	
	SD card for regular fixed battery data & alarm event logging	
	Optional Bluetooth for mobile application dashboard showing real time battery data	
	Optional 4G telematics card for getting real time battery performance data and remote programming capability	
Applicable Standards	Transportation	UN38.3
	Safety	ARAI 048, UL2271
	EMI/EMC	EN61000-4-2 to -6
	Environment	ROHS complaint

Mobile App



Cloud Management System



High performance BMS

